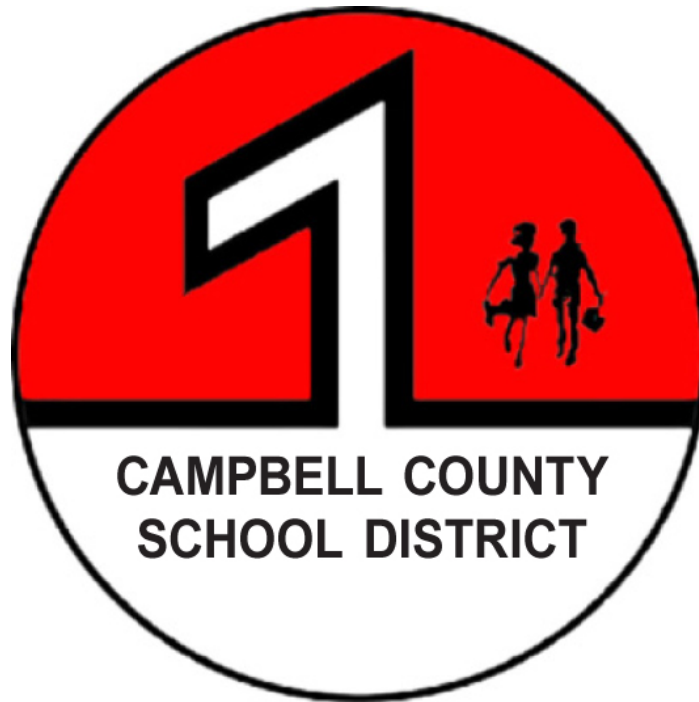


Campbell County School District #1



Teaching Effectively...Learning Successfully

**Sage Valley Junior High School
CCSD #1 District Board Report
Mr. Terrence J. Quinn, Principal**

2017-2018

SVJH Strategic Goals

Goal 1: Improve Student Achievement

- Students will demonstrate proficiency or growth as measured by district assessments.
- SVJH grade levels will exceed the state average in content areas measured by the Wyoming state assessment.

Goal 2: Support Student and Staff Well-Being

- Together, SVJH and CCSD will provide comprehensive programs and services to support students in social, emotional, and physical well-being.
- The district will provide wellness programs and services to support all staff.

School Demographics

Workforce

Staff	2015-2016	2016-2017	2017-2018
Certified	76	74	59
ESP	35	34	33

Enrollment

Oct. 1, 2015	Grade	7	8	9	Total
	Total	333	359	321	1013
Oct. 1, 2016	Grade	7	8	9	Total
	Total	346	333	354	1033
Current 2017	Grade	7	8	NA	Total
	Total	337	285	NA	622

Subgroups

Category		2015-2016			2016-2017			2017-2018		
		School	District	State	School	District	State	School	District	State
Gender	Female	44%	48%	48%	45%	48%	48%	49%	52%	48%
	Male	56%	52%	52%	55%	52%	51%	51%	48%	52%
IEP		12%	13%	14%	11%	14%	13%	10%	14%	13%
Free/Reduced		25%	36%	38%	27%	36%	35%	27%	38%	35%
Mobility		13%	13%	NA	10%	16%	NA	15%	15%	NA
ELL		>1%	3%	4%	1%	5%	4%	4%	5%	4%
Ethnicity	Native American	1%	2%	3%	1.5%	2%	3%	1%	2%	3%
	Asian	1%	1%	1%	.5%	1%	1%	2%	1%	1%
Black		1%	1%	1%	1%	1%	1%	2%	1%	1%
Hispanic		5%	11%	13%	5%	11%	14%	7%	11%	15%
Pacific Islander		1%	0%	0%	1%	0%	0%	0%	0%	0%
White		91%	85%	79%	91%	96%	78%	88%	85%	81%

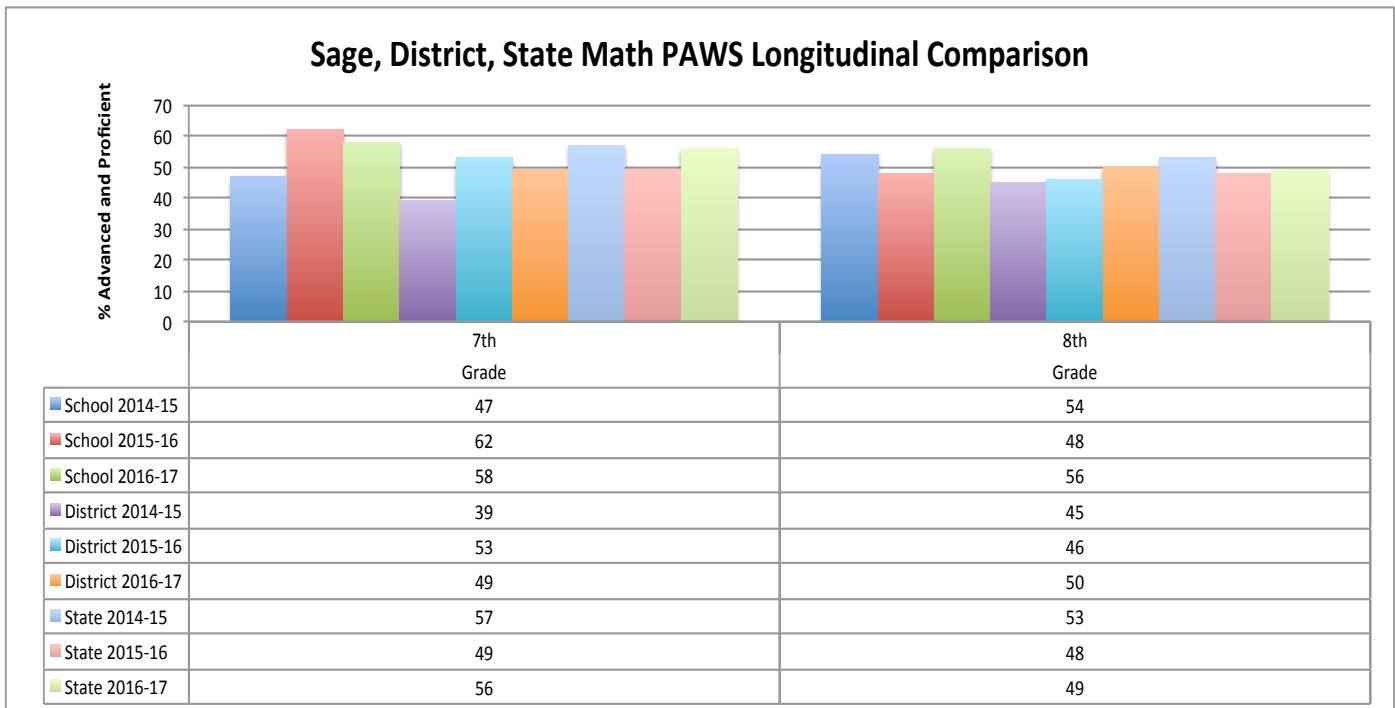
- **Became a 7/8 building, therefore both the total number of students and certified staff dropped. ESP staff remained consistent.**
- **7th grade numbers are consistent, however, our number of 8th grade students have dropped from recent years**
- **SVJH gender ratio a little more balanced than recent years.**
- **SVJH mobility rate has slightly increased.**
- **SVJH ELL numbers have risen as well.**

SVJH Measurable Objective #2 - Results Based on Student Achievement on SVJH's Strategic Plan

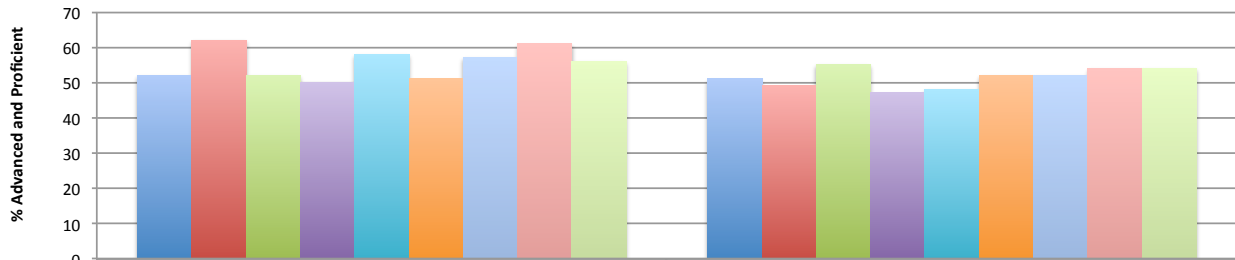
- SVJH levels will exceed the state average in content areas as measured by Wyoming's state assessment.

School Year	Grade	Subject	School	District	State
			Percent Proficient and Advanced	Percent Proficient and Advanced	Percent Proficient and Advanced
2016-17	07	Math	57.53%	49.43%	47.27%
2016-17	07	Reading	52.40%	50.73%	56.39%
2016-17	08	Math	56.39%	50.24%	48.58%
2016-17	08	Reading	55.14%	52.29%	53.85%
2016-17	08	Science	50.47%	44.37%	45.31%

Aspire 2017	English	Math	Reading	Science	Composite
9th Grade	429	428	425	425	427
District	428	426	422	425	425
State	428	425	423	426	426
Ranges	400-456	400-460	400-442	400-449	400-452

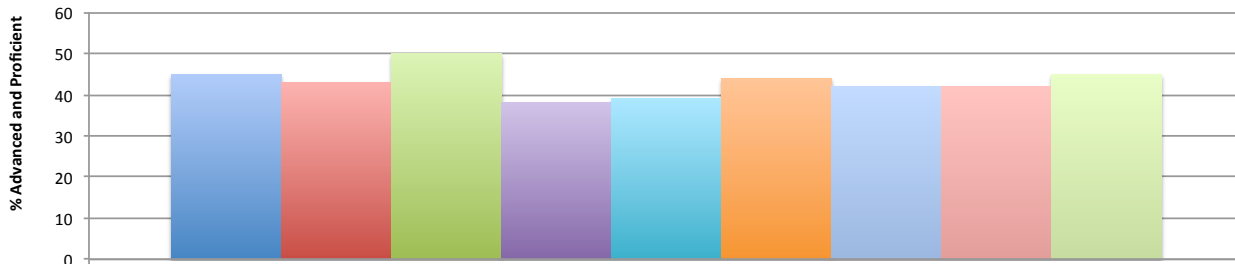


Sage, District, State Reading PAWS Longitudinal Comparison



	7th Grade	8th Grade
School 2014-15	52	51
School 2015-16	62	49
School 2016-17	52	55
District 2014-15	50	47
District 2015-16	58	48
District 2016-17	51	52
State 2014-15	57	52
State 2015-16	61	54
State 2016-17	56	54

Sage, District, State Science PAWS Longitudinal Comparison



	Grade 8th
School 2014-15	45
School 2015-16	43
School 2016-17	50
District 2014-15	38
District 2015-16	39
District 2016-17	44
State 2014-15	42
State 2015-16	42
State 2016-17	45

Aspire Longitudinal Comparison

	English 400-456			Math 400-460			Reading 400-442			Science 400-449			Composite 400-452		
	School	District	State	School	District	State	School	District	State	School	District	State	School	District	State
2015-16	427	427	427	427	425	425	425	422	422	426	424	425	426	425	425
2016-17	429	428	428	428	426	425	425	422	423	425	425	426	427	425	426

- The percentage of SVJH 7th and 8th grade students that are proficient and advanced increased over the past two years in Math, Reading and Science

SVJH Subgroup Proficiencies

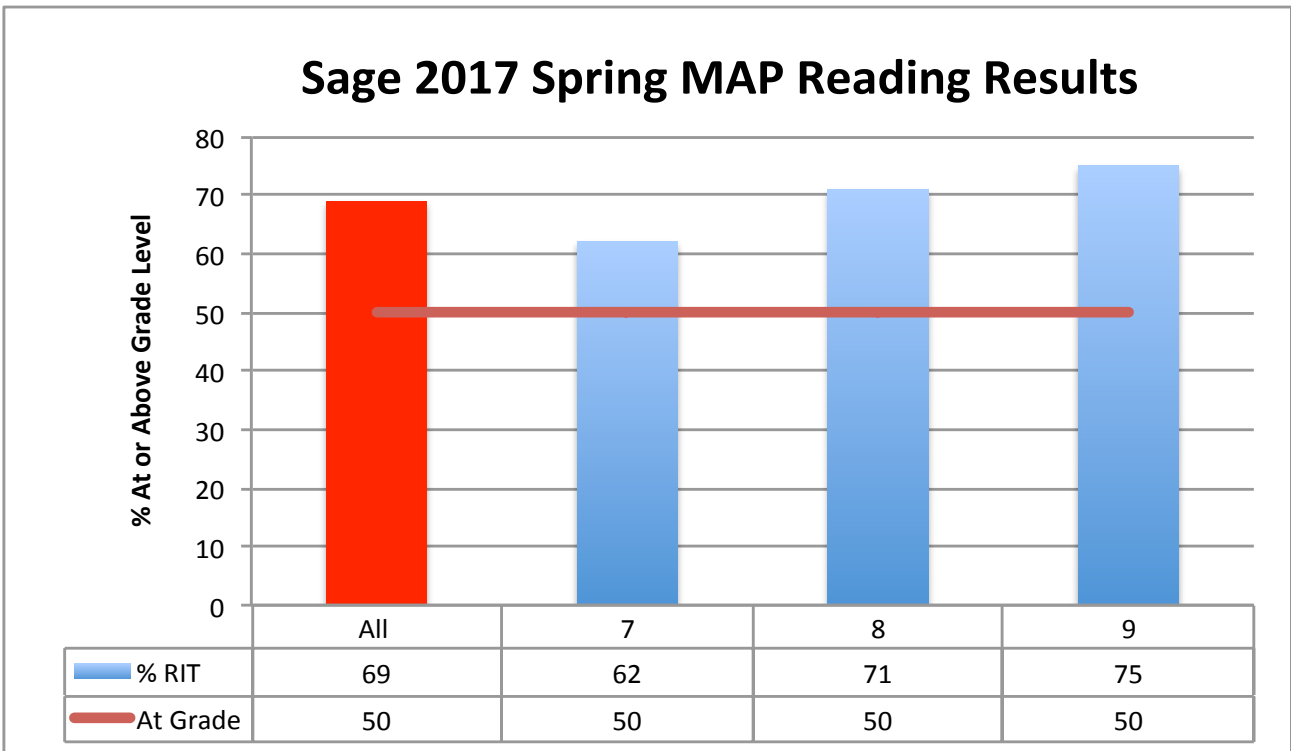
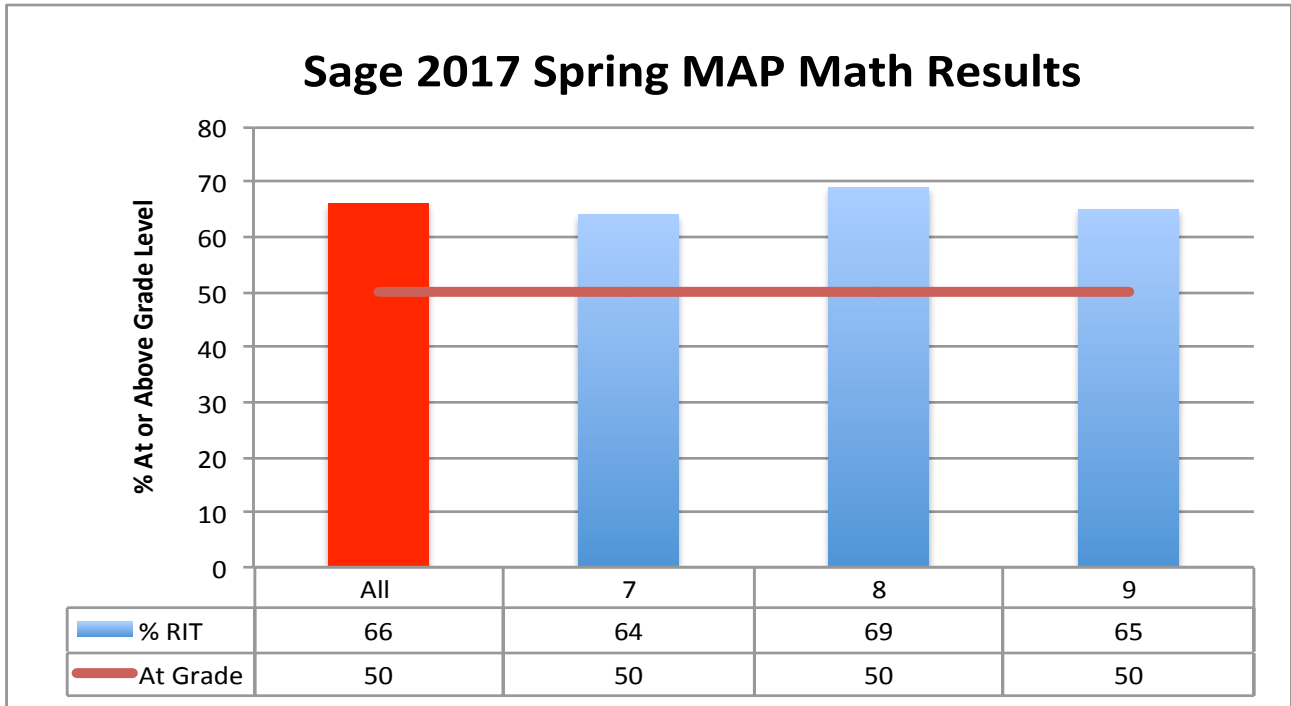
Category		2014-2015			2015-2016			2016-2017		
		Math	Reading	Science	Math	Reading	Science	Math	Reading	Science
Gender	Female	50%	55%	45%	52%	58%	40%	56%	55%	45%
	Male	51%	48%	45%	58%	54%	46%	56%	54%	55%
IEP		23%	24%	24%	26%	20%	24%	28%	24%	17%
Free/Reduced		37%	40%	32%	44%	45%	38%	38%	38%	38%
ELL		NA	NA	NA	NA	NA	NA	NA	NA	NA
Ethnicity	Native American	NA	NA	NA	NA	NA	NA	NA	NA	NA
	Asian	NA	NA	NA	NA	NA	NA	NA	NA	NA
	Black	20%	50%	NA	63%	63%	NA	62%	46%	NA
	Hispanic	26%	38%	24%	38%	42%	43%	38%	40%	27%
	Pacific Islander	NA	NA	NA	NA	NA	NA	NA	NA	NA
White		53%	54%	48%	57%	56%	44%	58%	54%	52%

- **The percentage of students proficient or advanced in Math increased in all categories except for students on free/reduced lunch students. That group of students have increased compared to 2015 but not as many compared to 2016.**
- **The same trend of increased percentage of students that were proficient and advanced compared to 2015 but dropping slightly compared to 2016 was similar in Reading in all categories identified above.**
- **The percentage of students that performed at the proficient or advanced level in Science increased in all ethnicities, free and reduced students as well as both genders over the past two years.**

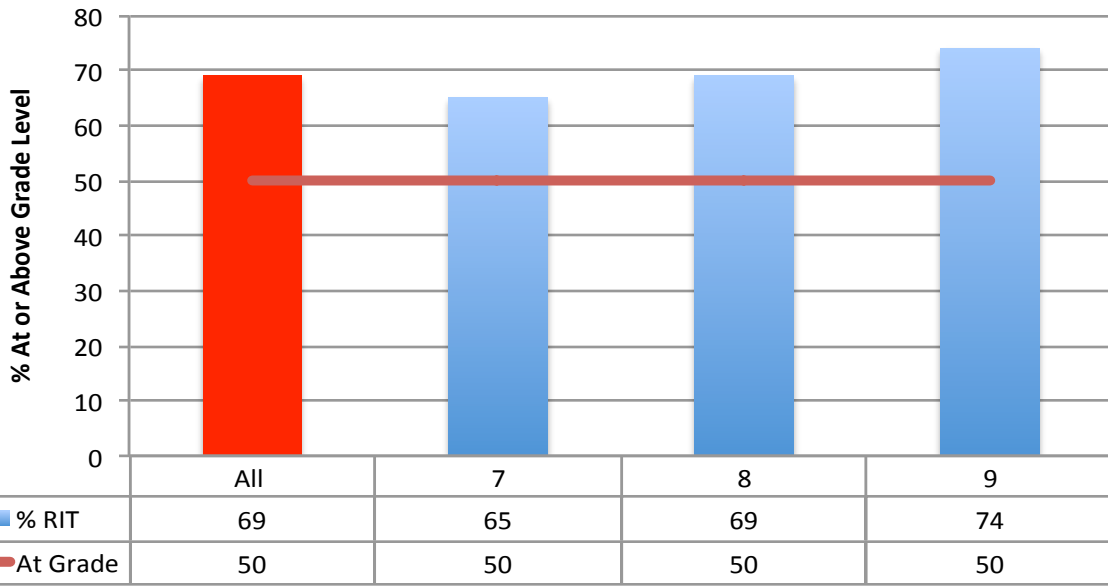
SVJH Measurable Objective #1 - Results Based on Student Achievement on SVJH's Strategic Plan

- SVJH students will demonstrate proficiency or growth as measured by district assessments

Spring MAP Assessment-Status

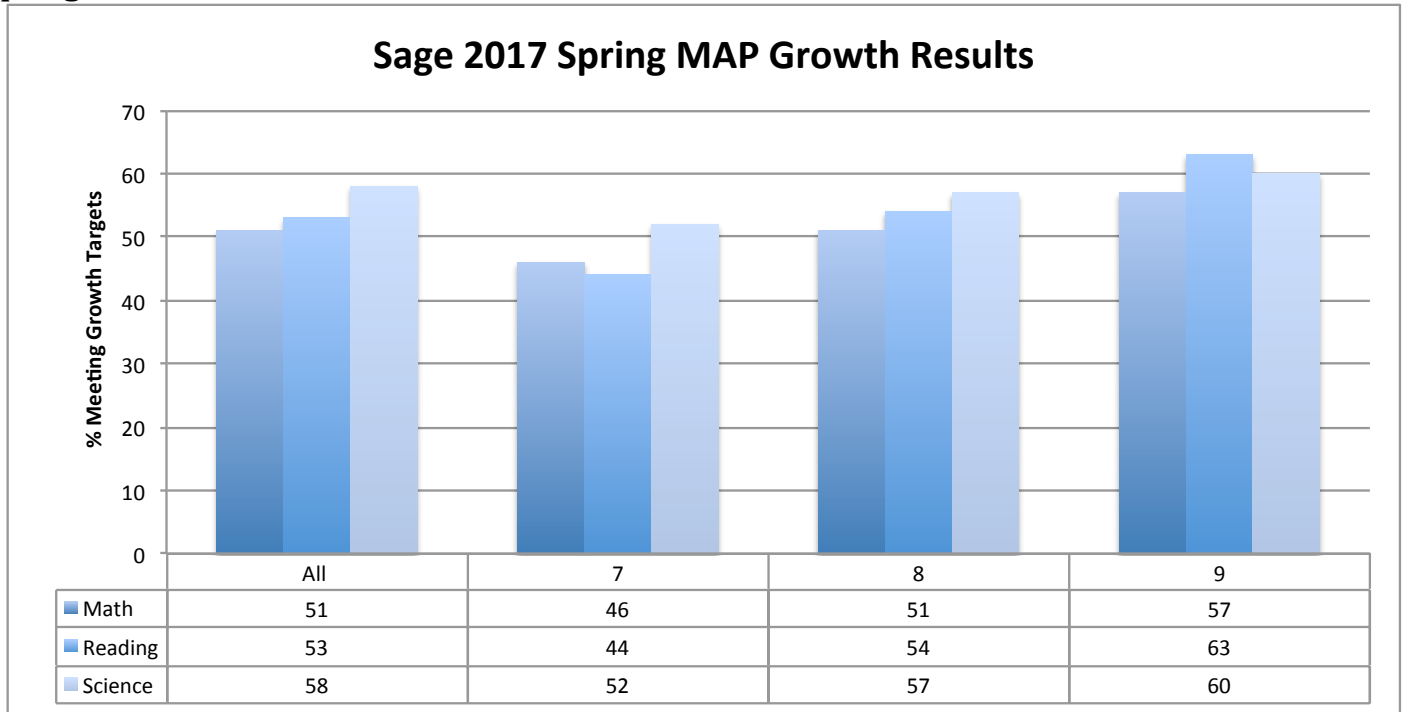


Sage 2017 Spring MAP Science Results



- **66% of our students are performing at or above grade level in Math according to MAP.**
 - **69% of 8th grade performed at or above grade level in Math**
- **69% of our students are performing at or above grade level in Reading according to MAP.**
 - **75% of 9th grade students performed at or above grade level in Reading**
- **69% of our students are performing at or above grade level in Science according to MAP**
 - **74% of our 9th grade students performed at or above grade level in Science**

Spring MAP Assessment – Growth



- **Over 50% of all students met their growth targets in Math, Reading and Science when assessed by MAP.**

WAEA School Performance

Campbell County School District #1 Performance Level Reports (WAEA)

CCSD #1 Junior High Schools	2013-1014	2014-2015	2015-2016	2016-2017
Sage Valley	PME	NME	ME	ME

District Name:	Campbell #1
School Name:	Sage Valley Junior High School
Grades Served:	7-9
Enrollment:	943
MEETING EXPECTATIONS	

Schools in Wyoming may fall within one of four performance levels based on their pattern of performance on FOUR indicators: Achievement, Growth, Equity, and Participation Rate.

The FOUR performance levels are:
 EXCEEDING EXPECTATIONS
 MEETING EXPECTATIONS
 PARTIALLY MEETING EXPECTATIONS
 NOT MEETING EXPECTATIONS

School Indicator Performance Only students enrolled at the school for a full academic year were included. Full Academic Year is October 1st through the midpoint of the state assessment window.			
Indicator	Category	Count of Students	Description
Growth	Meeting Targets	572	Growth is a median student growth percentile (MGP) in reading and math combined for all students in grades four through eight as measured by the PAWS.
Equity	Below Targets	146	Equity is the median student growth percentile (MGP) in reading and math combined for a subgroup of students who had low reading and math test scores in the prior year.
Achievement	Meeting Targets	600	Achievement is the percent proficient or above on state tests in reading, mathematics, and science.
Participation Rate	Met		The participation rate requirement is 95%. The participation rate threshold is 90%. When a school's participation rate is below the requirement but at or above the threshold, the school is docked one performance level. When a school's participation rate is below the threshold the school is considered not scorable and is assigned to the not meeting expectation performance level.

- Sage Valley Junior High demonstrated performance levels that met Wyoming’s state expectations for the second year in a row.
- SVJH met the expectations on Growth, Achievement and Participation indicators for performance.